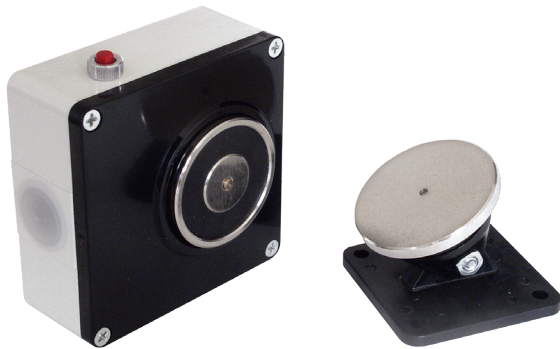


2.2

Electromagnetic door release units

Series 1350 / 1360



- EN 1155 approved
- Wall mounting
- User selectable dual holding strength
- Aluminium case
- Release button and protection circuit
- Damping counter plate included

Series 1350 / 1360

Housing material	Die-cast aluminium, white epoxy painting
Cover material	Thermoplastic, black
Core material	Steel
Keeper plate material	Thermoplastic support, steel plate
Operation	Released when de-energised
Type of connection	Terminals
Operating temperature	-10°C to +55°C
Protection rating	IP40
Standard equipment	Flexible keeper plate, release button, diodes protection circuit

Series 1350 / 1360

Aluminium electromagnetic door release unit

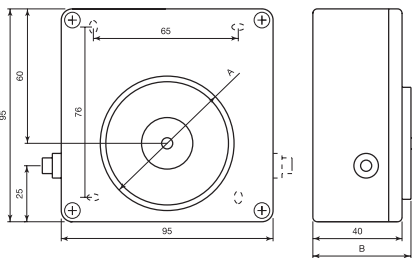
The aluminium case with epoxy varnishing ensures a high robustness. The circuit includes a dual protection diode against disturbances and polarity reversals.

The holding strength can be selected by means of a specific internal link (25/50 Kg and 50/100 Kg).

A built-in spring release allows residual magnetic forces to be overcome thus ensuring quick, reliable door release. Provided with counter-plate.

EN 1155 approved.

Dimensions



Order codes

Code	Holding strength $\pm 15\%$	Nominal voltage	Nominal current	Core diameter A	Height B	Package weight	Notes
1350-CSA	25-50 Kg/245-490 N	24 Vdc	25-45 mA	50 mm	45 mm	0.8 Kg	2 protection diodes
1360-CSA	50-100 Kg/490-980 N	24 Vdc	40-100 mA	60 mm	50 mm	1 Kg	2 protection diodes

Certificate and Declaration of Performance available on our website www.coopercsa.it

Accessories

1353-CSA	55 mm diameter adjustable keeper plate
1363-CSA	60 mm diameter adjustable keeper plate