



Katalog nødlys januar 2026 v.1



Powering Business Worldwide



Markeringslys

CrystalWay	4
Exit Cube LED	6
FlexiTech ED	7
FlexiTech EW.....	8
FlexiTech EC.....	9
GuideLed	11
GuideLed DX dynamisk.....	14
Matrix adaptivt	16
RoundTech EC.....	17
Velos.....	18
46011 LED 60 meter	19
71xx1/ 79xx1 LED	20



Lede- og markeringslys

Atlantic LED	21
Atlantic LED lavtemp.....	22
Atlantic II LED.....	23
Atlantic II LED lavtemp	24
FlexiTech Tube	25
NexiTech	26
SafeLite.....	28
Sirios.....	29



Ledelys

BeamLite.....	30
BeamTech	31
FlexiTech SE	32
FlexiTech SU.....	33
GuideLed SL CG-S.....	34
GuideLed SL CGLine+	35
i-P65 LED Plus	36
RoundTech.....	37
3000 LED.....	38
8x022 LED.....	39
SL 9116 LED	40
Håndlykter	41



Overvåkingsmoduler og drivere

V-CG-S.....	42
V-CG-SL	43



Adresserbare sentraler

CGLine+	44
AE-CGLine+ adaptivt.....	45
LP-Star	46
AE-CU dynamisk	47
DualGuard -S.....	48
ZB-S reservedeler	49
RCM-fjernovervåking	51
Batterier og kabelsett	52
CG-Vision	53
VisionGuard	54

Kontaktinformasjon

Kontakt Eaton	siste side
---------------------	------------

1. Armaturer



CrystalWay

Varenummer	Elnr.	Type	Kommentar
1. CrystalWay 20 meter			
AT CGL+			
40071354590	6617070	CrystalWay 19821 CGLine+ 20m	<i>Inkl. piktogr.sett. Vegg/tak</i>
CPS CG-S			
40071354592		CrystalWay 19021 CG-S 20m	<i>Inkl. piktogr.sett. Vegg/tak</i>
2. CrystalWay 30 meter			
AT CGL+			
40071354591	6617081	CrystalWay 19822 CGLine+ 30m	<i>Inkl. piktogr.sett. Vegg/tak</i>
CPS CG-S			
40071354593		CrystalWay 19022 CG-S 30m	<i>Inkl. piktogr.sett. Vegg/tak</i>
3. CrystalWay med IA-funksjon			
AT CGL+			
40071777000		CrystalWay 19821 IA CGLine+ 20m	<i>Med pulsfunksjon</i>
40071777001		CrystalWay 19822 IA CGLine+ 30m	<i>Med pulsfunksjon</i>
4. Metalldeksler			
AT CGL+			
40071708300		CrystalWay 19821 CGL+ 20m metalldeksel	<i>Rustfritt stål</i>
40071708287		CrystalWay 19822 CGL+ 30m metalldeksel	<i>Rustfritt stål</i>
CPS CG-S			
40071708213		CrystalWay CG-S 20m svart metalldeksel	<i>Svart metall</i>
40071708229		CrystalWay 19021 CG-S 20m metalldeksel	<i>Rustfritt stål</i>
40071708218		CrystalWay 19022 CG-S 30m metalldeksel	<i>Rustfritt stål</i>
5. Tilbehør			
LUM10571		CrystalWay 30m panelpanel reservedel	
LUM10570		CrystalWay 20m panelsett reservedel	
LUM10560	6617082	CrystalWay vaieroppheng 2m	
LUM105606M		CrystalWay vaieroppheng 6m	
LUM10566		CrystalWay 30m boks for betong	
LUM10565		CrystalWay 20m boks for betong	
LUM10563	6617083	CrystalWay innf.ramme 20m m. dekkplate	
LUM10564	6617084	CrystalWay innf.ramme 30m m. dekkplate	
LUM10561		CrystalWay innf.ramme 20m u. dekkplate	
LUM10562		CrystalWay innf.ramme 30m u. dekkplate	
LUM10567		CrystalWay 20m tilleggs hus for mer plass	
LUM10572		CrystalWay 20m & 30m klips reservedel	<i>Reservedel</i>
6. Reservedeler			
LUM10568		CrystalWay 20m batteripakke Li-ion	
LUM10569		CrystalWay 30m batteripakke Li-ion	

1. Armaturer



CrystalWay

Varenummer Elnr. Type Kommentar

7. Andre piktogrammer 20 meter

LUM10573		CrystalWay piktogram 20m PN	<i>Reservedel</i>
LUM10574		CrystalWay piktogram 20m PV	<i>Reservedel</i>
LUM10575		CrystalWay piktogram 20m PH	<i>Reservedel</i>
LUM10577		CrystalWay piktogram 20m PO	<i>Reservedel</i>
LUM10576		CrystalWay piktogram blank 20m	<i>Reservedel</i>
LUM10584		CrystalWay piktogram vertikal PN 20m	
LUM10585		CrystalWay piktogram vertikal PV 20m	
LUM10586		CrystalWay piktogram vertikal PH 20m	
LUM10596		CrystalWay piktogram 45° PH ned 20m	
LUM10597		CrystalWay piktogram 45° PV ned 20m	
LUM10595		CrystalWay piktogram 45° PH opp 20m	
LUM10598		CrystalWay piktogram 45° PV opp 20m	
40071354249		CrystalWay piktogram MM 20m	<i>Piktogram manuell melder</i>
LUM10966		CrystalWay piktogram slokkeapparat 20m	
LUM10967		CrystalWay piktogram branntrommel 20m	

8. Andre piktogrammer 30 meter

LUM10587		CrystalWay piktogram 30m PN	<i>Reservedel</i>
LUM10588		CrystalWay piktogram 30m PV	<i>Reservedel</i>
LUM10589		CrystalWay piktogram 30m PH	<i>Reservedel</i>
LUM10591		CrystalWay piktogram 30m PO	<i>Reservedel</i>
LUM10590		CrystalWay piktogram blank 30m	<i>Reservedel</i>
40071355331		CrystalWay piktogram MM 30m	<i>Piktogram manuell melder</i>
LUM10592		CrystalWay piktogram vertikal PN 30m	
LUM10593		CrystalWay piktogram vertikal PV 30m	
LUM10594		CrystalWay piktogram vertikal PH 30m	
LUM10972		CrystalWay piktogram 45° PH opp 30m	<i>Piktogram manuell melder</i>
LUM10973		CrystalWay piktogram 45° PH ned 30m	
LUM10974		CrystalWay piktogram 45° PV ned 30m	
LUM10975		CrystalWay piktogram 45° PV opp 30m	

1. Armaturer



Exit Cube LED

Varenummer	Elnr.	Type	Kommentar
------------	-------	------	-----------

1. Armaturer

AT CGL+

40071353420

Exit Cube CGLine+ 20m

CPS CG-S

40071353421

Exit Cube 33022 CG-S 20m

40071353422

Exit Cube 33042 CG-S 40m

2. Tilbehør

40071353444

Exit Cube veggbrakett

1. Armaturer



FlexiTech ED (tak/vegg)

Varenummer	Elnr.	Type	Kommentar
1. Armaturer			
AT CGL+			
FT2ED4ICGL18	6617165	FlexiTech ED CGLine+ 20m	Inkl. piktogr.sett. LiFePO4-batteri
AT			
FT2ED4IATL18	6617146	FlexiTech ED AT 20m	Inkl. piktogr.sett. LiFePO4-batteri
CPS CG-S			
FT2ED4ICGS		FlexiTech ED CG-S 20m	Inkl. piktogramsett

2. Innfellingsrammer

FT2-RKC	6617285	FlexiTech SE og ED innfellingsramme
FT2-WG	6617145	FlexiTech SE og ED beskyttelsesgitter

FT2ED-MCC-B		FlexiTech2 ED metalldeksel tak svart
FT2ED-MCC-DG		FlexiTech2 ED metalldeksel tak mørk grå
FT2ED-MCC-S		FlexiTech2 ED metalldeksel tak sølv
FT2ED-MCW-B		FlexiTech2 ED metalldeksel vegg svart
FT2ED-MCW-DG		FlexiTech2 ED metalldeksel vegg mørk grå
FT2ED-MCW-S		FlexiTech2 ED metalldeksel vegg sølv
FT2ED-MCRC-B		FlexiTech2 ED metalldeksel innfelt svart
FT2ED-MCRC-DG		FlexiTech2 ED metalldeksel innf.mørk grå
FT2ED-MCRC-S		FlexiTech2 ED metalldeksel innfelt sølv

4. Andre piktogrammer

FT2ED-PICTO-VL		FlexiTech2 ED piktogram vertikal PV 20m
FT2ED-PICTO-VR		FlexiTech2 ED piktogram vertikal PH 20m
FT2ED-PICTO-VD		FlexiTech2 ED piktogram vertikal PN 20m
FT2ED-PICTO-UR		FlexiTech2 ED piktogram 45° PH opp 20m
FT2ED-PICTO-DR		FlexiTech2 ED piktogram 45° PH ned 20m
FT2ED-PICTO-DL		FlexiTech2 ED piktogram 45° PV opp 20m
FT2ED-PICTO-UL		FlexiTech2 ED piktogram 45° PV ned 20m
FT2ED-PICTO-FEX		FlexiTech2 ED piktogr. slokkeapparat 20m
FT2ED-PICTO-FHO		FlexiTech2 ED piktogram brannslange 20m
FT2ED-PICTO-CR		FlexiTech2 ED piktogram førstehjelp 20m
FT2ED-PICTO-EWL		FlexiTech2 ED piktogram PV vindu 20m
FT2ED-PICTO-EWR		FlexiTech2 ED piktogram PH vindu 20m
FT2ED-PICTO-EWD		FlexiTech2 ED piktogram PN vindu 20m

5. Piktogramsett

FT2ED-4I		FlexiTech2 ED piktogramsett (n,o,h,v)20m	Reservedel
----------	--	--	------------

6. Reservedeler

FT-BAT1		Batteripakke LiFePO4 3,2V/0,6Ah	AT
FT-BATLL2		Batteripakke LiFePO4 3,2V/1,5Ah	CGLine+

1. Armaturer



FlexiTech EW (vegg)

Varenummer	Elnr.	Type	Kommentar
1. Armaturer			
AT CGL+			
FT1EW4ICGL18		FlexiTech1 ML vegg 12m CGL+	<i>Inkl. piktogr.sett. LiFePO4-batteri</i>
FT1EW4ICGL18IP		FlexiTech1 ML vegg 12m CGL+IP66	<i>Inkl. piktogr.sett. LiFePO4-batteri</i>
FT2EW4ICGL18IP		FlexiTech2 ML vegg 20m CGL+ IP66	<i>Inkl. piktogr.sett. LiFePO4-batteri</i>
FT3EW4ICGL18		FlexiTech3 ML vegg 30m CGL+	<i>Inkl. piktogr.sett. LiFePO4-batteri</i>
FT3EW4ICGL18IP		FlexiTech3 ML vegg 30m CGL+ IP66	<i>Inkl. piktogr.sett. LiFePO4-batteri</i>
AT			
FT2EW4IATL18		FlexiTech2 ML vegg 20m AT	<i>Inkl. piktogr.sett. LiFePO4-batteri</i>
FT2EW4IATL18IP		FlexiTech2 ML vegg 20m AT IP66	<i>Inkl. piktogr.sett. LiFePO4-batteri</i>
FT3EW4IATL18		FlexiTech3 ML vegg 30m AT	<i>Inkl. piktogr.sett. LiFePO4-batteri</i>
FT3EW4IATL18IP		FlexiTech3 ML vegg 30m AT IP66	<i>Inkl. piktogr.sett. LiFePO4-batteri</i>
CPS CG-S			
FT1EW4ICGS		FlexiTech1 ML vegg 12m CG-S	<i>Inkl. piktogramsett</i>
FT1EW4ICGSIP		FlexiTech1 ML vegg 12m CG-S IP66	<i>Inkl. piktogramsett</i>
FT2EW4ICGS		FlexiTech2 ML vegg 20m CG-S	<i>Inkl. piktogramsett</i>
FT2EW4ICGSIP		FlexiTech2 ML vegg 20m CG-S IP66	<i>Inkl. piktogramsett</i>
FT3EW4ICGS		FlexiTech3 ML vegg 30m CG-S	<i>Inkl. piktogramsett</i>
FT3EW4ICGSIP		FlexiTech3 ML vegg 30m CG-S IP66	<i>Inkl. piktogramsett</i>
2. Innfellingsrammer			
FT2-RK		FT2 EW_SU hvit innfellingsramme	
FT2-RK-B		FT2 EW_SU svart innfellingsramme	
FT2-RK-DG		FT2 EW_SU mørk grå innfellingsramme	
FT2-RK-S		FT2 EW_SU sølvfarget innfellingsramme	
FT3-RK		FT3 EW_SU hvit innfellingsramme	
FT3-RK-B		FT3 EW_SU svart innfellingsramme	
FT3-RK-DG		FT3 EW_SU mørk grå innfellingsramme	
FT3-RK-S		FT3 EW_SU sølvfarget innfellingsramme	
3. Metalldeksler			
FT1EWSU-MC-B		FT1 EW&SU svart metalldeksel	
FT1EWSU-MC-DG		FT1 EW&SU mørk grått metalldeksel	
FT1EWSU-MC-S		FT1 EW&SU sølvfarget metalldeksel	
FT2EWSU-MC-B		FT2 EW & SU svart metalldeksel	
FT2EWSU-MC-DG		FT2 EW & SU mørk grått metalldeksel	
FT2EWSU-MC-S		FT2 EW & SU sølvfarget metalldeksel	
FT3EWSU-MC-B		FT3 EW & SU svart metalldeksel	
FT3EWSU-MC-DG		FT3 EW & SU mørk grått metalldeksel	
FT3EWSU-MC-S		FT3 EW & SU sølvfarget metalldeksel	
4. Tilbehør			
FT2-WG	6617145	FlexiTech SE og ED beskyttelsesgitter	<i>For FlexiTech EW 12/20m</i>
40071348370	6617085	Beskyttelsesgitter 400x275x72mm	<i>For FlexiTech EW 30m</i>
5. Reservedeler			
FT-BAT1		Batteripakke LiFePO4 3,2V/0,6Ah	<i>For FlexiTech1 og 2</i>
FT-BAT2		Batteripakke LiFePO4 3,2V/1,5Ah	<i>For FlexiTech3</i>

1. Armaturer



FlexiTech EC (tak)

Varenummer	Elnr.	Type	Kommentar
1. Armaturer			
AT CGL+			
FT2EC4ICGL18		FlexiTech2 ML tak 20m CGL+	<i>Inkl. piktogr.sett. LiFePO4-batteri</i>
FT2EC4ICGL18IP		FlexiTech2 ML tak 20m CGL+ IP65	<i>Inkl. piktogr.sett. LiFePO4-batteri</i>
FT3EC4ICGL18		FlexiTech3 ML tak 30m CGL+	<i>Inkl. piktogr.sett. LiFePO4-batteri</i>
FT3EC4ICGL18IP		FlexiTech3 ML tak 30m CGL+ IP65	<i>Inkl. piktogr.sett. LiFePO4-batteri</i>
CPS CG-S			
FT2EC4ICGS		FlexiTech2 ML tak 20m CG-S	<i>Inkl. piktogramsett</i>
FT2EC4ICGSIP		FlexiTech2 ML tak 20m CG-S IP65	<i>Inkl. piktogramsett</i>
FT3EC4ICGS		FlexiTech3 ML tak 30m CG-S	<i>Inkl. piktogramsett</i>
FT3EC4ICGSIP		FlexiTech3 ML tak 30m CG-S IP65	<i>Inkl. piktogramsett</i>
2. Metalldeksler			
FT2EC-MC-B		FT2 EC svart metalldeksel	
FT2EC-MC-DG		FT2 EC mørk grått metalldeksel	
FT2EC-MC-S		FT2 EC sølvfarget metalldeksel	
FT3EC-MC-B		FT3 EC svart metalldeksel	
FT3EC-MC-DG		FT3 EC mørk grått metalldeksel	
FT3EC-MC-S		FT3 EC sølvfarget metalldeksel	
3. Pendelsett			
FTECCC-TSK-50		FT EC&CC pendelsett 0,5m hvit sokkel	
FTECCC-TSK-50-B		FT EC&CC pendelsett 0,5m svart sokkel	
FTECCC-TSK-50-DG		FT EC&CC pendelsett 0,5m mørk grå sokkel	
FTECCC-TSK-50-S		FT EC&CC pendelsett 0,5m sølv sokkel	
FTECCC-TSK-150		FT EC&CC pendelsett 1,5m hvit sokkel	
FTECCC-TSK-150-B		FT EC&CC pendelsett 1,5m ,svart sokkel	
FTECCC-TSK-150-DG		FT EC&CC pendelsett 1,5m,mørk grå sokkel	
FTECCC-TSK-150-S		FT EC&CC pendelsett 1,5m,sokkel sølv	
4. Flaggbrakett			
FT2ECCC-WB		FT2 EC & CC 20m hvit flaggbrakett	
FT2ECCC-WB-B		FT2 EC & CC 20m svart flaggbrakett	
FT2ECCC-WB-DG		FT2 EC & CC 20m mørk grå flaggbrakett	
FT2ECCC-WB-S		FT2 EC & CC 20m sølvfarget flaggbrakett	
FT3ECCC-WB		FT3 EC & CC, 30m hvit flaggbrakett	
FT3ECCC-WB-B		FT3 EC & CC 30m svart flaggbrakett, IP43	
FT3ECCC-WB-DG		FT3 EC & CC 30m mørk grå flaggbrakett	
FT3ECCC-WB-S		FT3 EC & CC 30m sølvfarget flaggbrakett	
5. Tilbehør			
E-WIRINGSET-IP		FlexiTech tilkoblingssett IP65	<i>Benyttes med brakett</i>
FTECCC-CF		FlexiTech EC&CC kjettingfeste hvit	
FT1SU-RP		FlexiTech1 SU hvit renoveringsramme	

1. Armaturer



FlexiTech EW/EC

Varenummer Elnr. Type Kommentar

1. Andre piktogrammer

FT2EWEC-PICTO-VL		FT 20m EW_EC_CW_CC piktogr. vertikal PV	
FT2EWEC-PICTO-VR		FT 20m EW_EC_CW_CC piktogr. vertikal PH	
FT2EWEC-PICTO-VD		FT 20m EW_EC_CW_CC piktogr. vertikal PN	
FT2EWEC-PICTO-UR		FT 20m EW_EC_CW_CC piktogr. 45° PH opp	
FT2EWEC-PICTO-DR		FT 20m EW_EC_CW_CC piktogr. 45° PH ned	
FT2EWEC-PICTO-DL		FT 20m EW_EC_CW_CC piktogr. 45° PV ned	
FT2EWEC-PICTO-UL		FT 20m EW_EC_CW_CC piktogr. 45° PV opp	
FT2EWEC-PICTO-FEX		FT 20m EW_EC_CW_CC piktogr.slokkeapparat	
FT2EWEC-PICTO-FHO		FT 20m EW_EC_CW_CC piktogr. brannslange	
FT2EWEC-PICTO-CR		FT 20m EW_EC_CW_CC piktogr. førstehjelp	
FT3EWEC-PICTO-VL		FT 30m EW_EC_CW_CC piktogr. vertikal PV	
FT3EWEC-PICTO-VR		FT 30m EW_EC_CW_CC piktogr. vertikal PH	
FT3EWEC-PICTO-VD		FT 30m EW_EC_CW_CC piktogr. vertikal PN	
FT3EWEC-PICTO-UR		FT 30m EW_EC_CW_CC piktogr. 45° PH opp	
FT3EWEC-PICTO-DR		FT 30m EW_EC_CW_CC piktogr. 45° PH ned	
FT3EWEC-PICTO-DL		FT 30m EW_EC_CW_CC piktogr. 45° PV ned	
FT3EWEC-PICTO-UL		FT 30m EW_EC_CW_CC piktogr. 45° PV opp	
FT3EWEC-PICTO-FEX		FT 30m EW_EC_CW_CC piktogr.slokkeapparat	
FT3EWEC-PICTO-FHO		FT 30m EW_EC_CW_CC piktogr. brannslange	
FT3EWEC-PICTO-CR		FT 30m EW_EC_CW_CC piktogr. førstehjelp	

FT1-4I		FlexiTech 12m EW piktogramsett	<i>Reservedel</i>
FT2-4I		FlexiTech 20m EW_EC_CW_CC piktogramsett	<i>Reservedel</i>
FT3-4I		FlexiTech 30m EW_EC_CW_CC piktogramsett	<i>Reservedel</i>

1. Armaturer



GuideLed

Varenummer	Elnr.	Type	Kommentar
------------	-------	------	-----------

1. Monteringssett vegg 20 og 30 meter

AT CGL+

40071353260		GuideLed 1x811 1-8t CGLLine+ veggsett	
40071353261		GuideLed 10812 1-8t CGLLine+innf.veggsett	

CPS CG-S

40071353641	6617172	GuideLed 1x011 CG-S veggmonteringssett	
40071353642		GuideLed 1x012 CG-S veggsett innf. D	
40071353644		GuideLed 1x012 CG-S veggsett innf. E	

2. Monteringssett Cinema 20 og 30 meter

CPS CG-S

40071354656		GuideLed Cinema 1X021 CG-S veggmont.sett	<i>Dimbart veggsett m. inngang</i>
40071352162		GuideLed dimmemodul V-CG-SLS 28	<i>Dimbar driver u. inngang</i>

3. Ensidige LED-piktogram for vegg

20 meter

40071354502	6617175	GuideLed LED-piktogram 20m PN	
40071354515		GuideLed LED-piktogram 20m PO	
40071354500	6617173	GuideLed LED-piktogram 20m PV	
40071354501	6617174	GuideLed LED-piktogram 20m PH	
40071355300		GuideLed LED-piktogram 20m 45° PV ned	
40071355301		GuideLed LED-piktogram 20m 45° PH ned	
40071355302		GuideLed LED-piktogram 20m 45° PV opp	
40071355303		GuideLed LED-piktogram 20m 45° PH opp	

30 meter

40071354532		GuideLed LED-piktogram 30m PN	
40071354545		GuideLed LED-piktogram 30m PO	
40071354530		GuideLed LED-piktogram 30m PV	
40071354531		GuideLed LED-piktogram 30m PH	
40071353348		GuideLed LED-piktogram 30m slokkeapp.	
40071353349		GuideLed LED-piktogram 30m brannslange	

4. Tilbehør

40071353643		GuideLed 10011/11011 kabelsett	
-------------	--	--------------------------------	--

5. Reservedeler

40071353398		Batteripakke Li-ion 3,6V 2150mAh	
-------------	--	----------------------------------	--

1. Armaturer



GuideLed

Varenummer	Elnr.	Type	Kommentar
------------	-------	------	-----------

1. Monteringssett tak 20 meter

AT CGL+

40071353264			GuideLed 10821 1-8t CGLine+ 20m taksett
40071353265			GuideLed 10822 1-8t CGLine+ pendel 0,5m
40071353268			GuideLed 10825 CGLine+ vaiersett 20m

CPS CG-S

40071353610	6617191		GuideLed 10021 CG-S takmonteringssett
40071353611			GuideLed 10022 CG-S 20m pendelsett 0,5m
40071353612			GuideLed 10023 CG-S 20m pendelsett 1,5m
40071353613			GuideLed 10024 CG-S innf.monteringssett
40071353609			GuideLed 10025 CG-S vaiersett utenpå.
40071353640			GuideLed 10026/11026 CG-S vaiersett inf.

2. Monteringssett tak 30 meter

AT CGL+

40071353269			GuideLed 11821 1-8t CGLine+ 30m taksett
40071353273			GuideLed 11825 CGLine+ vaiersett 30m

CPS CG-S

40071353620			GuideLed 11021 CG-S takmonteringssett
40071353621			GuideLed 11022 CG-S 30m pendelsett 0,5m
40071353622			GuideLed 11023 CG-S 30m pendelsett 1,5m
40071353623			GuideLed 11024 CG-S innf.monteringssett
40071353619			GuideLed 11025 CG-S vaiersett utenpå.
40071353640			GuideLed 10026/11026 CG-S vaiersett inf.

1. Armaturer



GuideLed

Varenummer Elnr. Type Kommentar

3. Dobbeltsidige LED-piktogram 20 meter

20 meter

Varenummer	Elnr.	Type	Kommentar
40071354503	6617192	GuideLed LED-piktogram 20m PH/PV	
40071354504		GuideLed LED-piktogram 20m PN/PN	
40071354505		GuideLed LED-piktogram 20m PV/BL	
40071354506		GuideLed LED-piktogram 20m PH/BL	
40071354507		GuideLed LED-piktogram 20m PN/BL	
40071354508		GuideLed LED-piktogram 20m PH/PV-ut	
40071354509		GuideLed LED-piktogram 20m PH/PV-inn	
40071354516		GuideLed LED-piktogram 20m PO/BL	
40071354517		GuideLed LED-piktogram 20m PO/PO	
40071354510		GuideLed LED-piktogram 20m PH/PV vaier	
40071354511		GuideLed LED-piktogram 20m PN/PN vaier	
40071354512		GuideLed LED-piktogram 20m PV/BL vaier	
40071354513		GuideLed LED-piktogram 20m PH/BL vaier	
40071354514		GuideLed LED-piktogram 20m PN/BL vaier	

4. Dobbeltsidige LED-piktogram 30 meter

30 meter

40071354533		GuideLed LED-piktogram 30m PH/PV	
40071354534		GuideLed LED-piktogram 30m PN/PN	
40071354535		GuideLed LED-piktogram 30 m PV/BL	
40071354536		GuideLed LED-piktogram 30 m PH/BL	
40071354537		GuideLed LED-piktogram 30m PN/BL	
40071354538		GuideLed LED-piktogram 30m PH/PV-ut	
40071354539		GuideLed LED-piktogram 30m PH/PV-inn	
40071354546		GuideLed LED-piktogram 30m PO/BL	
40071354547		GuideLed LED-piktogram 30m PO/PO	
40071354540		GuideLed LED-piktogram 30m PH/PV vaier	
40071354541		GuideLed LED-piktogram 30m PN/PN vaier	
40071354542		GuideLed LED-piktogram 30m PV/BL vaier	
40071354543		GuideLed LED-piktogram 30m PH/BL vaier	
40071354544		GuideLed LED-piktogram 30m PN/BL vaier	

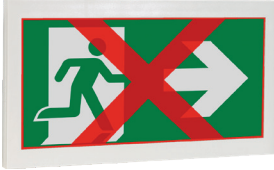
5. Tilbehør

40071353645	GuideLed 10021 CG-S kjettingfeste	For 20 meter armatur
40071353646	GuideLed 11021 CG-S kjettingfeste	For 30 meter armatur
40071352892	GuideLed CG-S innfellingshus betong 20m	
40071352893	GuideLed CG-S innfellingshus betong 30m	

6. Reservedeler

40071353398	Batteripakke Li-ion 3,6V 2150mAh
-------------	----------------------------------

1. Armaturer



GuideLed DX/DXC

Varenummer	Elnr.	Type	Kommentar
1. Monteringssett vegg 20 og 30 meter			
CPS CG-S			
40071354646		GuideLed DX 1x011 CG-S veggsett	<i>Med styreinngang</i>
40071355085		GuideLed DXC 1x011 CG-S veggsett	<i>Med bussinngang</i>
2. Ensidige dynamiske LED-piktogram for vegg			
20 meter			
40071355550		GuideLed DX/DXC 10011 LED-pikto. 20m PV	
40071355551		GuideLed DX/DXC 10011 LED-pikto. 20m PH	
40071355552		GuideLed DX/DXC 10011 LED-pikto. 20m PN	
40071355553		GuideLed DX/DXC 10011 LED-pikto. 20m PO	
30 meter			
40071355555		GuideLed DX/DXC 11011 LED-pikto. 30m PV	
40071355556		GuideLed DX/DXC 11011 LED-pikto. 30m PH	
40071355365		GuideLed DX/DXC 11011 LED-pikto. 30m PN	
40071355558		GuideLed DX/DXC 11011 LED-pikto. 30m PO	

1. Armaturer



GuideLed DX/DXC

Varenummer	Elnr.	Type	Kommentar
1. Monteringssett tak 20 meter			
CPS CG-S			
40071355295		GuideLed DX 10021 CG-S 20m takmont.sett	<i>Med styreinngang</i>
40071355481		GuideLed DX 10022 CG-S 20m pendels. 0,5m	<i>Med styreinngang</i>
40071355482		GuideLed DX 10023 CG-S 20m pendels. 1,5m	<i>Med styreinngang</i>
40071355483		GuideLed DX 10024 CG-S 20m innf.sett	<i>Med styreinngang</i>
40071355488		GuideLed DXC 10021 CG-S 20m takmont.sett	<i>Med bussinngang</i>
40071355489		GuideLed DXC 10022 CG-S 20m pendels.0,5m	<i>Med bussinngang</i>
40071355490		GuideLed DXC 10023 CG-S 20m pendels.1,5m	<i>Med bussinngang</i>
40071355491		GuideLed DXC 10024 CG-S 20m innf.sett	<i>Med bussinngang</i>
2. Monteringssett tak 30 meter			
CPS CG-S			
40071355484		GuideLed DX 11021 CG-S 30m takmont.sett	<i>Med styreinngang</i>
40071355485		GuideLed DX 11022 CG-S 30m pendels. 0,5m	<i>Med styreinngang</i>
40071355486		GuideLed DX 11023 CG-S 30m pendels. 1,5m	<i>Med styreinngang</i>
40071355487		GuideLed DX 11024 CG-S 30m innf.sett	<i>Med styreinngang</i>
40071355492		GuideLed DXC 11021 CG-S 30m takmont.sett	<i>Med bussinngang</i>
40071355493		GuideLed DXC 11022 CG-S 30m pendels.0,5m	<i>Med bussinngang</i>
40071355494		GuideLed DXC 11023 CG-S 30m pendels.1,5m	<i>Med bussinngang</i>
40071355495		GuideLed DXC 11024 CG-S 30m innf.sett	<i>Med bussinngang</i>
3. Dobbeltsidige dynamiske LED-piktogram 20 meter			
20 meter			
40071355330		GuideLed DX/DXC LED-pikto. 20m PH/PV	
40071355531		GuideLed DX/DXC LED-pikto. 20m PN/PN	
40071355532		GuideLed DX/DXC LED-pikto. 20m PV/BL	
40071355533		GuideLed DX/DXC LED-pikto. 20m PH/BL	
40071355534		GuideLed DX/DXC LED-pikto. 20m PN/BL	
40071355535		GuideLed DX/DXC LED-pikto. 20m PH/PV-ut	
40071355536		GuideLed DX/DXC LED-pikto. 20m PH/PV-inn	
4. Dobbeltsidige dynamiske LED-piktogram 30 meter			
30 meter			
40071355540		GuideLed DX/DXC LED-pikto. 30m PH/PV	
40071355541		GuideLed DX/DXC LED-pikto. 30m PN/PN	
40071355542		GuideLed DX/DXC LED-pikto. 30m PV/BL	
40071355543		GuideLed DX/DXC LED-pikto. 30m PH/BL	
40071355544		GuideLed DX/DXC LED-pikto. 30m PN/BL	
40071355545		GuideLed DX/DXC LED-pikto. 30m PH/PV-ut	
40071355546		GuideLed DX/DXC LED-pikto. 30m PH/PV-inn	
5. Tilbehør			
40071353645		GuideLed 10021 CG-S kjettingfeste	<i>For 20 meter armatur</i>
40071353646		GuideLed 11021 CG-S kjettingfeste	<i>For 30 meter armatur</i>
40071352892		GuideLed CG-S innfellingshus betong 20m	
40071352893		GuideLed CG-S innfellingshus betong 30m	

1. Armaturer



Matrix

Varenummer	Elnr.	Type	Kommentar
------------	-------	------	-----------

1. Enkeltsidig adaptivt markeringslys

AT CGL+

40071777002

Matrix 1-3t CGLine+ IP42

40071777003

Matrix 1-3t CGLine+ IP65

2. Tilbehør

40071777024

Matrix enkeltsidig takbrakett hvit

For ett markeringslys

40071777025

Matrix dobbeltsidig takbrakett hvit

For to markeringslys

1. Armaturer



RoundTech EC

Varenummer	Elnr.	Type	Kommentar
1. RoundTech 20 meter			
AT CGL+			
RT2R2EC4ICGL3H	6617200	RoundTech MR EC markeringslys CGL+ 20m	Inkl. piktogr.sett. LiFePO4-batteri
2. Andre piktogrammer			
FT2ED-PICTO-VL		FlexiTech2 ED piktogram vertikal PV 20m	
FT2ED-PICTO-VR		FlexiTech2 ED piktogram vertikal PH 20m	
FT2ED-PICTO-VD		FlexiTech2 ED piktogram vertikal PN 20m	
FT2ED-PICTO-UR		FlexiTech2 ED piktogram 45° PH opp 20m	
FT2ED-PICTO-DR		FlexiTech2 ED piktogram 45° PH ned 20m	
FT2ED-PICTO-DL		FlexiTech2 ED piktogram 45° PV opp 20m	
FT2ED-PICTO-UL		FlexiTech2 ED piktogram 45° PV ned 20m	
FT2ED-PICTO-FEX		FlexiTech2 ED piktogr. slokkeapparat 20m	
FT2ED-PICTO-FHO		FlexiTech2 ED piktogram brannslange 20m	
FT2ED-PICTO-CR		FlexiTech2 ED piktogram førstehjelp 20m	
FT2ED-PICTO-EWL		FlexiTech2 ED piktogram PV vindu 20m	
FT2ED-PICTO-EWR		FlexiTech2 ED piktogram PH vindu 20m	
FT2ED-PICTO-EWD		FlexiTech2 ED piktogram PN vindu 20m	
FT2ED-4I		FlexiTech2 ED piktogramsett (n,o,h,v)20m	Reservedel
4. Reservedeler			
RT2R-BAT3		Batteripakke 3,2V 3Ah LiFePO4	

1. Armaturer



Velos

Varenummer	Elnr.	Type	Kommentar
------------	-------	------	-----------

1. Monteringssett

AT CGL+

O-ESC-CGL Velos PSU 1,5t CGL+ uten LED-piktogram

AT

O-ESM-AT Velos PSU 1t selvtest uten LED-piktogram

CPS CG-S

O-ES-CG-S Velos PSU CG-S uten LED-piktogram

CPS 230V

O-ESMAINS Velos PSU 230V

Uadresserbar

2. LED-piktogrammer

O-ESP-IR		Velos LED-piktogram 30m PH/BL
O-ESP-ILR		Velos LED-piktogram 30m PH/PV
O-ESP-ID		Velos LED-piktogram 30m PN/BL
O-ESP-IDD		Velos LED-piktogram 30m PN/PN
O-ESP-IU		Velos LED-piktogram 30m PO/BL
O-ESP-IUU		Velos LED-piktogram 30m PO/PO
O-ESP-IL		Velos LED-piktogram 30m PV/BL
O-ESP-WILR		Velos LED-piktogram 30m rullestol PH/PV
O-ESP-WIDD		Velos LED-piktogram 30m rullestol PN/PN
O-ESP-FH-EXT		Velos LED-piktogram 30m brannbekj.utstyr
O-ESP-FHD		Velos LED-piktogram 30m brannslange PN
O-ESP-H		Velos LED-piktogram 30m hydrant rød
O-ESP40-ILR	6617064	Velos LED-piktogram 40m PH/PV
O-ESP40-IDD	6617065	Velos LED-piktogram 40m PN/PN
O-ESP40-ID	6617066	Velos LED-piktogram 40m PN/BL
O-ESP40-IU		Velos LED-piktogram 40m PO/BL
O-ESP40-IUU		Velos LED-piktogram 40m PO/PO
O-ESP40-WILR		Velos LED-piktogram 40m rullestol PH/PV
O-ESP40-WIDD		Velos LED-piktogram 40m rullestol PN/PN

3. Tilbehør

O-ESA-FLEX	6617061	Velos fleksibel veggbrakett
O-ESA-PS30	6617062	Velos pendel 48cm
O-ESA-RSA	6617063	Velos vaieroppheng 150cm
O-ESA-BMB		Velos veggbrakett
O-ESA-LMB		Velos flaggbrakett
O-ESA-RB		Velos innfellingsmodul

1. Armaturer



46x11 LED

Varenummer	Elnr.	Type	Kommentar
1. Armaturer			
AT CGL+			
40071777015		46811 LED 1-3t CGLine+	<i>LiFePO4-batteri</i>
CPS CG-S			
40071351580		46011 LED CG-S 60m IP65	
2. Armaturer hygiene			
AT CGL+			
40071777016		46811 LED HYG 1-3t 60m CGLine+	<i>LiFePO4-batteri</i>
CPS CG-S			
40071351578		46011 LED HYG CG-S 60m IP65	
3. Armaturer lavtemp			
CPS CG-S			
40071351579		46011 LED LT CG-S 60m IP65	
4. Piktogrammer 60 meter			
40071351588		46011 piktogram PH	
40071351589		46011 piktogram PN	
40071354210		46011 piktogram PO	
40071351587		46011 piktogram PV	
5. Tilbehør			
40071350005		46011 nippel med ventilasjon M20	

1. Armaturer



71xx1/79xx1 LED

Varenummer	Elnr.	Type	Kommentar
1. Markeringslys 32 meter uten piktogrammer			
AT CGL+			
40071354827		71811 1-8h/D LED CGLine+	
40071354828		71821 1-8h/D LED CGLine+ WM	<i>Krever èn monteringsbrakett</i>
40071354830		71821 1-8h/D LED CGLine+ PM	<i>Krever èn monteringsbrakett</i>
40071354829		71821 1-8h/D LED CGLine+ DM	<i>Krever èn monteringsbrakett</i>
CPS CG-S			
40071351280		71011 LED CG-S 32m	
40071351283		71021 LED CG-S PM 32m	<i>Krever èn monteringsbrakett</i>
40071351281		71021 LED CG-S WM 32m	<i>Krever èn monteringsbrakett</i>
40071351282		71021 LED CG-S DM 32m	<i>Krever èn monteringsbrakett</i>
2. Markeringslys 60 meter uten piktogrammer			
AT CGL+			
40071708304		79811 LED 60m CGLine+	<i>For veggmontering</i>
CPS CG-S			
40071708011		79011 LED CG-S 60m	
40071708067		79021 LED CG-S PM 60m	<i>Krever to monteringsbraketter</i>
40071708245		79021 LED CG-S DM 60m	<i>Krever to monteringsbraketter</i>
40071708246		79021 LED CG-S WM 60m	<i>Krever to monteringsbraketter</i>
3. Piktogrammer 32 meter			
40071354241		Piktogramplate for 71011/71021 32m PH	
40071354242		Piktogramplate for 71011/71021 32m PN	
40071354240		Piktogramplate for 71011/71021 32m PV	
4. Piktogrammer 60 meter			
40071354260		Piktogram for 79011/79021 60m PV	
40071354261		Piktogram for 79011/79021 60m PH	
40071354262		Piktogram for 79011/79021 60m PN	
40071354263		Piktogram for 79011/79021 60m PO	
40071351189		79011 (CG-S): opalt deksel	
40071351199		Blindplate for 79021	
5. Tilbehør			
40071351011		7x021(CG-S) monteringsbrakett 42mm	
40071351497		7x021(CG-S) monteringsbrakett 100mm	
40071350776		Pendelsett 1,5m sølv for 7X021 PM	
40071350775		Pendelsett 1m sølv for 7X021 PM	
40071344599		Pendelsett 0,5m sølv for 7X021 PM	
40071351197		Blindplate for 71x11 / 71x21	
40071351158		7x021 PM kjettingfeste	
40071348370	6617085	Beskyttelsesgitter 400x275x72mm	<i>For 32 meter versjon</i>

1. Armaturer



Atlantic LED

Varenummer	Elnr.	Type	Kommentar
1. Enkeltsidig markeringslys IK10/IP65			
AT CGL+			
40071354875		Atlantic LED S CGLine+Heat ML vegg	Med varmeelement
40071354870		Atlantic LED S CGLine+ ML vegg	
CPS CG-S			
40071354890		Atlantic LED S CG-S ML vegg	
2. Dobbeltsidig markeringslys IK10/IP65			
AT CGL+			
40071354876		Atlantic LED D CGLine+Heat ML tak	Med varmeelement
40071354871		Atlantic LED D CGLine+ ML tak	
CPS CG-S			
40071354891		Atlantic LED D CG-S ML tak	
3. Ledelys IK10/IP65			
AT CGL+			
40071354877		Atlantic LED R CGLine+Heat asymmetrisk	Med varmeelement
40071354878		Atlantic LED O CGLine+Heat symmetrisk	Med varmeelement
40071354872		Atlantic LED R CGLine+ asymmetrisk	
40071354873		Atlantic LED O CGLine+ symmetrisk	
CPS CG-S			
40071354892		Atlantic LED R CG-S asymmetrisk	Normal takhøyde
40071354893		Atlantic LED O CG-S symmetrisk	Normal takhøyde
40071354991		Atlantic LED R HB CG-S asymmetrisk	For høyt tak
40071354990		Atlantic LED O HB CG-S symmetrisk	For høyt tak
4. Ledelys vegg utendørs IK10/IP65			
AT CGL+			
40071354879	6617050	Outdoor Wall CGLine+ m/varmeelement	Med varmeelement
CPS CG-S			
40071354894		Outdoor Wall CG-S	Asymmetrisk
40071708274		Outdoor Wall LED 1200lm CG-S	1200 lm
5. Piktogrammer			
155-000-011		Atlantic LED S piktogram PH	For enkeltsidig armatur vegg
155-000-012		Atlantic LED S piktogram PV	For enkeltsidig armatur vegg
155-000-013	6617040	Atlantic LED S piktogram PN	For enkeltsidig armatur vegg
40071355423		Atlantic LED S piktogram PO	For enkeltsidig armatur vegg
155-000-211		Atlantic LED D piktogram PH	*For dobbeltsidig armatur tak
155-000-212		Atlantic LED D piktogram PV	*For dobbeltsidig armatur tak
155-000-213		Atlantic LED D piktogram PN	*For dobbeltsidig armatur tak
40071350287		Atlantic LED D piktogram PO	*For dobbeltsidig armatur tak
155-000-209		Atlantic LED D piktogram blank	*For dobbeltsidig armatur tak
6. Reservedeler			
40071353399		Batteripakke Li-ion 3,6V 4300mAh	For Atlantic LED CGLine

* Dobbeltsidig armatur må utstyres med 2 piktogrammer

1. Armaturer



Atlantic LED LT

Varenummer	Elnr.	Type	Kommentar
1. Enkeltsidig markeringslys IK10/IP65			
CPS CG-S			
40071354864		Atlantic LED LT S CG-S ML vegg	Lavtemp -40 °C
2. Dobbeltsidig markeringslys IK10/IP65			
CPS CG-S			
40071354865		Atlantic LED LT D CG-S ML tak	Lavtemp -40 °C
3. Ledelys IK10/IP65			
CPS CG-S			
40071354866		Atlantic LED LT R CG-S asymmetrisk	Lavtemp -40 °C. Normal takhøyde
40071354867		Atlantic LED LT O CG-S symmetrisk	Lavtemp -40 °C. Normal takhøyde
40071354868		Atlantic LED R LT HB CG-S asymmetrisk	Lavtemp -40 °C for høyt tak
40071354869		Atlantic LED O LT HB CG-S symmetrisk	Lavtemp -40 °C for høyt tak

1. Armaturer



Atlantic II LED

Varenummer	Elnr.	Type	Kommentar
1. Enkeltsidig markeringslys IK09/IP66			
CPS CG-S			
40071355601		Atlantic LED II S CG-S ML vegg IP66	
2. Dobbeltsidig markeringslys IK09/IP66			
CPS CG-S			
40071355602		Atlantic LED II D CG-S ML tak IP66	
3. Ledelys standard lysfluks IK09/IP66			
CPS CG-S			
40071355603		Atlantic LED II R CG-S asymmetrisk IP66	For normal takhøyde 250lm
40071355604		Atlantic LED II O CG-S symmetrisk IP66	For normal takhøyde 260lm
40071355608		Atlantic LED II R HB CG-S asym. IP66	Smalstrålet 380lm
40071355607		Atlantic LED II O HB CG-S sym. IP66	Smalstrålet 380lm
4. Ledelys høy lysfluks IK09/IP66			
CPS CG-S			
40071708375		Atlantic LED II 1100lm R CG-S asym.	1100 lm
40071708377		Atlantic LED II 1100lm O CG-S sym.	1100 lm
40071708378		Atlantic LED II 1100lm HB R CG-S asym.	Smalstrålet 1100lm
40071708379		Atlantic LED II 1100lm HB O CG-S sym.	Smalstrålet 1100lm
5. Ledelys vegg utendørs IK09/IP66			
CPS CG-S			
40071355605		Outdoor Wall II R CG-S IP66	Asymmetrisk
40071355606		Outdoor Wall II O CG-S IP66	Symmetrisk
6. Piktogrammer			
155-000-011		Atlantic LED S piktogram PH	For enkeltsidig armatur vegg
155-000-012		Atlantic LED S piktogram PV	For enkeltsidig armatur vegg
155-000-013	6617040	Atlantic LED S piktogram PN	For enkeltsidig armatur vegg
40071355423		Atlantic LED S piktogram PO	For enkeltsidig armatur vegg
155-000-211		Atlantic LED D piktogram PH	*For dobbeltsidig armatur tak
155-000-212		Atlantic LED D piktogram PV	*For dobbeltsidig armatur tak
155-000-213		Atlantic LED D piktogram PN	*For dobbeltsidig armatur tak
40071350287		Atlantic LED D piktogram PO	*For dobbeltsidig armatur tak
155-000-209		Atlantic LED D piktogram blank	*For dobbeltsidig armatur tak
7. Tilbehør			
40071708276		Atlantic LED vaierfeste	
8. Reservedeler			
011-900-061		Atlantic LED D deksel (reservedel)	
011-900-060		Atlantic LED S&R deksel (reservedel)	

* Dobbeltsidig armatur må utstyres med 2 piktogrammer

1. Armaturer



Atlantic II LED LT

Varenummer	Elnr.	Type	Kommentar
1. Enkeltsidig markeringslys IK09/IP66			
CPS CG-S			
40071355609		Atlantic LED II LT S CG-S ML vegg IP66	Lavtemp -40 °C
2. Dobbeltsidig markeringslys IK09/IP66			
CPS CG-S			
40071355610		Atlantic LED II LT D CG-S ML tak IP66	Lavtemp -40 °C
3. Ledelys IK09/IP66			
CPS CG-S			
40071355611		Atlantic LED II LT R CG-S asym. IP66	Lavtemp -40 °C. Normal takhøyde
40071355612		Atlantic LED II LT O CG-S sym. IP66	Lavtemp -40 °C. Normal takhøyde
40071355613		Atlantic LED II R LT HB CG-S asym. IP66	Lavtemp -40 °C for høyt tak
40071355614		Atlantic LED II O LT HB CG-S sym. IP66	Lavtemp -40 °C for høyt tak

1. Armaturer



FlexiTech Tube

Varenummer	Elnr.	Type	Kommentar
1. Armaturer			
AT CGL+			
FT2ST400CGL13IP		FlexiTech Tube LL 400lm CGLine+ 1-3t	
FT2ET4ACGL18IP		FlexiTech Tube ML 24m CGLine+ 1-8t	<i>Inkl. piktogrammer</i>
CPS CG-S			
FT2ST400CGSIP		FlexiTech Tube LL 400lm CGS	
FT2ET4ACGSIP		FlexiTech Tube ML 24m CGS	<i>Inkl. piktogrammer</i>
2. Reservedeler			
FT2ET-4A		FlexiTech piktogramsett 24m reservedel	

1. Armaturer



NexiTech

Varenummer	Elnr.	Type	Kommentar
1. Armaturer			
AT CGL+			
NEXI150-CGL	6617012	NexiTech LED 150lm 1,5t CGLine+	
AT			
Y7-71005483	6617000	NexiTech LED 150lm 1t AT m. piktogrammer	<i>Inkl. piktogramsett</i>
NEXI250-AT		NexiTech LED 250lm 1,5t AT	
CPS CG-S			
NEXI250-CGS		NexiTech LED 250lm CG-S	
NEXI500-CGS		NexiTech LED 500lm CG-S	
NEXI1000-CGS		NexiTech LED 1000lm CG-S	
NEXI1000-CGS-IP		NexiTech LED 1000lm CG-S IP65	
CPS 230V			
NEXI500-230		NexiTech LED 500lm 230V	<i>Uadresserbar</i>
2. NexiTech Door			
AT			
NEXI-D-AT		NexiTech LED DOOR 1,5t AT	
CPS CG-S			
NEXI-D-CGS		NexiTech LED DOOR CG-S	
CPS 230V			
NEXI-D-230		NexiTech LED DOOR 230V	<i>Uadresserbar</i>
3. Piktogrammer			
NEXI-PICTO-R	6617009	Nexi piktogram 20m PH	
NEXI-PICTO-D	6617007	Nexi piktogram 20m PN	
NEXI-PICTO-U	6617010	Nexi piktogram 20m PO	
NEXI-PICTO-L	6617008	Nexi piktogram 20m PV	
NEXI-PICTO-FEX		Nexi piktogram 20m slokkeapparat	
NEXI-PICTO-FHO		Nexi piktogram 20m brannslange	
4. Piktogramplater med ledelysfunksjon opal			
NEXI-PLEXO-20-DB		Nexi piktogrampanel opal 20m PN/BL	
NEXI-PLEXO-20-DD		Nexi piktogrampanel opal 20m PN/PN	
NEXI-PLEXO-20-LR		Nexi piktogrampanel opal 20m PH/PV	
NEXI-PLEXO-20-UB		Nexi piktogrampanel opal 20m PO/BL	
NEXI-PLEXO-20-UU		Nexi piktogrampanel opal 20m PO/PO	
NEXI-PLEXO-LR		Nexi piktogrampanel opal 30m PH/PV	
NEXI-PLEXO-DB		Nexi piktogrampanel opal 30m PN/BL	
NEXI-PLEXO-DD		Nexi piktogrampanel opal 30m PN/PN	
NEXI-PLEXO-UB		Nexi piktogrampanel opal 30m PO/BL	
NEXI-PLEXO-UU		Nexi piktogrampanel opal 30m PO/PO	

1. Armaturer



NexiTech

Varenummer Elnr. Type Kommentar

5. Piktogramplater uten ledelysfunksjon

Varenummer	Elnr.	Type	Kommentar
NEXI-PEXL-LR	6617003	Nexi piktogrampanel 30m PH/PV	
NEXI-PEXL-LR		Nexi piktogrampanel 30m PH/PV	
NEXI-PEXL-IP		Nexi piktogrampanel 30m inkl.pikto IP65	
NEXI-PEXL-DB		Nexi piktogrampanel 30m PN/BL	
NEXI-PEXL-DB	6617001	Nexi piktogrampanel 30m PN/BL	
NEXI-PEXL-DD		Nexi piktogrampanel 30m PN/PN	
NEXI-PEXL-DD	6617002	Nexi piktogrampanel 30m PN/PN	
NEXI-PEXL-UB		Nexi piktogrampanel 30m PO/BL	
NEXI-PEXL-UU		Nexi piktogrampanel 30m PO/PO	

6. Tilbehør

Varenummer	Elnr.	Type	Kommentar
NEXI-FC	6617005	NexiTech Innfellingsmodul	
NEXI-IP	6617004	NexiTech IP65-sett	
NEXI-FR		NexiTech pyntelist	

7. Reservedeler

Varenummer	Type	Kommentar
NEXI-BAT1	Batteripakke NiCd 3x1,2V 0,8Ah stav	For NexiTech AT 1t 150 lm
NEXI-BAT2	Batteripakke NiCd 7,2V 1,7Ah stav	
NEXI-BAT4	Batteripakke NiCd 7,2V 2Ah stav	For NexiTech 1000 lm

1. Armaturer



SafeLite

Varenummer	Elnr.	Type	Kommentar
1. SafeLite 20 AT			
AT			
SL2MNM65G1C4A-AT	6617290	SafeLite 20 AT kombiarmatur 1t IP65	<i>Inkl. 4 piktogrammer</i>
CPS CG-S			
SL2-M65F0FCGS		SafeLite 200lm CG-S 20m	<i>Uten piktogrammer</i>
SL2-M65J0JCGS		SafeLite ledelys 400lm CG-S	
2. Tilbehør			
SL2CD	6617294	SafeLite kjegleformet piktogramplate 20m	<i>For dobbeltsidig skilting</i>
SL2PG	6617293	Beskyttelsesgitter SafeLite 20m	
SL2RB	6617291	SafeLite 20 innfellingsramme	
SL2OP	6617299	SafeLite 20 opal skjerm	
3. Piktogrammer			
SL24A	6617295	SafeLite piktogramsett 20 m (h,v,n,o)	<i>Selvklebende piktogrammer</i>
4. Reservedeler			
NEXI-BAT1		Batteripakke NiCd 3x1,2V 0,8Ah stav	<i>For NexiTech150 lm og SafeLite</i>

1. Armaturer



BeamLite II

Varenummer	Elnr.	Type	Kommentar
1. Lyskastere			
AT CGL+			
BL2MD-E1CGL		BeamLite II 2x400lm 1t NiCd CGL	<i>NiCd-batteri</i>
CPS CG-S			
BL2M-ECGS		BeamLite II 2x400lm CG-S	
2. Tilbehør			
BTLGRID		BeamTech stort gitter (54x44x22)	
3. Reservedeler			
BL2M-BATN1		Batteripakke NiCd 3,6V/4Ah	<i>For BeamLite 2x400lm 1t</i>

1. Armaturer



BeamTech

Varenummer	Elnr.	Type	Kommentar
1. Små lyskastere med ett hode			
AT CGL+			
BT1SC-B1CGL		BeamTech Small 1x250lm 1t NiCd CGL	<i>NiCd-batteri</i>
BT1SL-D3CGL		BeamTech Small 1x500lm 3t LiFePO4 CGL	<i>LiFePO4-batteri</i>
CPS CG-S			
BT1S-CCGS		BeamTech 1x400lm CG-S	
2. Små lyskastere med to hoder			
AT CGL+			
BT2SC-D1CGL		BeamTech Small 2x250lm 1t NiCd CGL	<i>NiCd-batteri</i>
BT2SL-D3CGL		BeamTech Small 2x250lm 3t LiFePO4 CGL	<i>LiFePO4-batteri</i>
BT2SL-F1CGL		BeamTech Small 2x500lm 1t LiFePO4 CGL	<i>LiFePO4-batteri</i>
AT			
BT2SL-F1-AT	6617247	BeamTech Small 2x500lm 1t LiFePO4 AT	<i>LiFePO4-batteri</i>
CPS CG-S			
BT2S-ECGS		BeamTech 2x400lm CG-S	
3. Store lyskastere med 2 hoder			
AT CGL+			
BT2LC-D1CGL		BeamTech Large 2x250lm 1t NiCd CGL	<i>NiCd-batteri</i>
BT2LL-D3CGL		BeamTech Large 2x250lm 3t LiFePO4 CGL	<i>LiFePO4-batteri</i>
BT2LL-F3CGL		BeamTech Large 2x500lm 3t LiFePO4 CGL	<i>LiFePO4-batteri</i>
AT			
BT2LL-F1-AT		BeamTech Large 2x500lm 1t LiFePO4 AT	<i>LiFePO4-batteri</i>
4. Store lyskastere med 4 hoder			
AT CGL+			
BT4LL-G1CGL		BeamTech Large 4x500lm 1t LiFePO4 CGL	<i>LiFePO4-batteri</i>
5. Tilbehør			
BT1SRB		BeamTech Small 1 innfellingsmodul	
BT2SRB		BeamTech Small 2 innfellingsmodul	
BTSGRID		BeamTech Small/BeamLite gitter(53x30x22)	
6. Reservedeler			
BT-BATN4		Batteripakke NiCd 4.8V/1.7Ah	<i>For BeamTech m. NiCd</i>
BT-BATL1		Batteripakke LiFePo4 6.4V/3.2Ah	<i>For BeamTech m. LiFePO4</i>

1. Armaturer



FlexiTech SE

Varenummer	Elnr.	Type	Kommentar
1. Armaturer			
AT CGL+			
FT2SE300CGL13	6617163	FlexiTech SE CGLine+ 300lm asym.	<i>LiFePO4-batteri</i>
FT2SE600CGL13	6617150	FlexiTech SE CGLine+ 600lm asym.	<i>LiFePO4-batteri</i>
FT2SE300CGL13IP	6617148	FlexiTech SE CGLine+ 300lm asym. IP65	<i>LiFePO4-batteri</i>
FT2SE600CGL13IP	6617149	FlexiTech SE CGLine+ 600lm asym. IP65	<i>LiFePO4-batteri</i>
AT			
FT2SE300ATT13	6617147	FlexiTech SE AT 300lm asym.	<i>LiFePO4-batteri</i>
FT2SE600ATT13	6617284	FlexiTech SE AT 600lm asym.	<i>LiFePO4-batteri</i>
FT2SE300ATT13IP	6617164	FlexiTech SE AT 300lm asym. IP65	<i>LiFePO4-batteri</i>
FT2SE600ATT13IP	6617166	FlexiTech SE AT 600lm asym. IP65	<i>LiFePO4-batteri</i>
CPS CG-S			
FT2SE400CGSIP		FlexiTech SE 400lm CG-S asym. IP65	
2. Symmetrisk linse			
FT2SE-LO	6617286	FlexiTech symmetrisk linse	
3. Tilbehør SE & ED			
FT2-RKC	6617285	FlexiTech SE og ED innfellingsramme	
FT2SE-RB		FlexiTech innfellingsboks for mur/gips	
FT2-WG	6617145	FlexiTech SE og ED beskyttelsesgitter	
4. Reservedeler SE & ED			
FT-BAT2		Batteripakke LiFePO4 3,2V/1,5Ah	For FlexiTech 300 lm
FT-BAT3		Batteripakke LiFePO4 3,2V/3Ah	For FlexiTech 600 lm

1. Armaturer



FlexiTech SU

Varenummer	Elnr.	Type	Kommentar
1. Armaturer			
AT CGL+			
FT1SU250CGL13		FlexiTech1 SU LL 250lm CGL+	<i>LiFePO4-batteri</i>
FT1SU250CGL13IP		FlexiTech1 SU LL 250lm CGL+ IP66	<i>LiFePO4-batteri</i>
FT1SU400CGL13		FlexiTech1 SU LL 420lm CGL+	<i>LiFePO4-batteri</i>
FT1SU400CGL18IP		FlexiTech1 SU LL 420lm CGL+ IP66	<i>LiFePO4-batteri</i>
FT3SU400CGL18		FlexiTech3 SU LL 420lm CGL+	<i>Stor. LiFePO4-batteri</i>
AT			
FT1SU250ATT13		FlexiTech1 SU LL 250lm AT	<i>LiFePO4-batteri</i>
FT1SU250ATT13IP		FlexiTech1 SU LL 250lm AT IP66	<i>LiFePO4-batteri</i>
FT1SU400ATT13		FlexiTech1 SU LL 420lm AT	<i>LiFePO4-batteri</i>
FT1SU400ATT13IP		FlexiTech1 SU LL 420lm AT IP66	<i>LiFePO4-batteri</i>
CPS CG-S			
FT1SU400CGS		FlexiTech SL1 LL 420lm CG-S	<i>Kompakt</i>
FT1SU400CGSIP		FlexiTech SL1 LL 420lm CG-S IP66	<i>Kompakt</i>
FT3SU400CGS		FlexiTech SL3 LL 420lm CG-S	<i>Stor</i>
2. Innfellingsrammer			
FT1-RK		FT1 EW_SU hvit innfellingsramme	
FT1-RK-B		FT1 EW_SU svart innfellingsramme	
FT1-RK-DG		FT1 EW_SU mørk grå innfellingsramme	
FT1-RK-S		FT1 EW_SU sølvfarget innfellingsramme	
3. Metalldeksler			
FT1EWSU-MC-B		FT1 EW&SU svart metalldeksel	
FT1EWSU-MC-DG		FT1 EW&SU mørk grått metalldeksel	
FT1EWSU-MC-S		FT1 EW&SU sølvfarget metalldeksel	
4. Tilbehør			
FT2-WG	6617145	FlexiTech SE og ED beskyttelsesgitter	
FT1SU-RP		FlexiTech1 SU hvit renoveringsramme	
5. Reservedeler			
FT-BAT2		Batteripakke LiFePO4 3,2V/1,5Ah	<i>For FlexiTech 250 lm</i>
FT-BAT3		Batteripakke LiFePO4 3,2V/3Ah	<i>For FlexiTech 420 lm</i>

1. Armaturer



GuideLed SL CG-S

Varenummer	Elnr.	Type	Kommentar
1. GuideLed III utenpåliggende			
CPS CG-S			
40071356732		GuideLed SL 13012.2 CG-S utenp. as.	
40071356733		GuideLed SL 13022.2 CG-S utenp. sy.	
40071356729		GuideLed SL 13052.2 CG-S utenpå. 5 lx	
40071356738		GuideLed SL 13032.2 CG-S utenpå. as.10lx	<i>For store takhøyder og 5 lx</i>
40071356737		GuideLed SL 13042.2 CG-S HB utenp. sy.	<i>For store takhøyder</i>
2. GuideLed III innfelt			
CPS CG-S			
40071356730		GuideLed SL 13011.2 CG-S innfelt as.	
40071356731		GuideLed SL 13021.2 CG-S innfelt sy.	
40071356728		GuideLed SL 13051.2 CG-S innfelt 5 lx	
40071356736		GuideLed SL 13031.2 CG-S innf. as. 10lx	<i>For store takhøyder og 5 lx</i>
40071356735		GuideLed SL 13041.2 CG-S HB innfelt sy.	<i>For store takhøyder</i>
3. Tilbehør			
40071353169		GuideLed SL 130x1.x CG-S innf.hus betong	
40071354489		GuideLed SL 130x2.x kappe	
40071354488		Kvadratisk ramme for GuideLed SL 130x1.x	
40071070978		Beskyttelsesgitter GuideLed 13000SL CG-S	

1. Armaturer



GuideLed SL CGLine+

Varenummer	Elnr.	Type	Kommentar
1. GuideLed III utenpåliggende			
AT CGL+			
40071356552		GuideLed SL 13822.2 CGL+ utenpå. sy.	<i>LiFePO4-batteri</i>
40071356553		GuideLed SL 13812.2 CGL+ utenpå. as.	<i>LiFePO4-batteri</i>
40071356554		GuideLed SL 13852.2 CGL+ utenpå. 5 lx	<i>LiFePO4-batteri</i>
2. GuideLed III innfelt			
AT CGL+			
40071356555		GuideLed SL 13821.2 CGL+ innfelt sy.	<i>LiFePO4-batteri</i>
40071356556		GuideLed SL 13811.2 CGL+ innfelt as.	<i>LiFePO4-batteri</i>
40071356557		GuideLed SL 13851.2 CGL+ innfelt 5 lx	<i>LiFePO4-batteri</i>
3. Tilbehør			
FT-BATLL3		Batteripakke LiFePO4 3,2V/3Ah	<i>Reservebatteri til modeller over</i>
40071354488		Kvadratisk ramme for GuideLed SL 130x1.x	
40071070978		Beskyttelsesgitter GuideLed 13000SL CG-S	

1. Armaturer



i-P65+

Varenummer	Elnr.	Type	Kommentar
1. Armaturer			
AT CGL+			
iP65PHP1HCGL		i-P65 Plus CGLine+ 1t PC asymmetrisk	<i>Polykarbonat</i>
iP65PHP3HCGL		i-P65 Plus CGLine+ 3t PC asymmetrisk	<i>Polykarbonat</i>
iP65PLP3HCGL		i-P65 Plus CGLine+ 3t PC symmetrisk	<i>Polykarbonat</i>
iP65PHA3HCGL		i-P65 Plus CGLine+ 3t alu. asymmetrisk	<i>Aluminium</i>
iP65PLA3HCGL		i-P65 Plus CGLine+ 3t alu. symmetrisk	<i>Aluminium</i>
AT			
IP65PHP1HIS	6617137	i-P65 Plus 1t AT PC asymmetrisk	<i>Polykarbonat</i>
IP65PLP1HIS	6617072	i-P65 Plus 1t AT PC symmetrisk	<i>Polykarbonat</i>
iP65PHP3HIS		i-P65 Plus 3t AT PC asymmetrisk	<i>Polykarbonat</i>
iP65PLP3HIS		i-P65 Plus 3t AT PC symmetrisk	<i>Polykarbonat</i>
CPS CG-S			
IP65PHPCGS		i-P65 Plus CG-S PC asymmetrisk	<i>Polykarbonat</i>
IP65PLPCGS		i-P65 Plus L CG-S PC symmetrisk	<i>Polykarbonat</i>
2. Tilbehør			
IP65PSUSPB		i-P65 Plus kjettingfeste	

1. Armaturer



RoundTech

Varenummer	Elnr.	Type	Kommentar
1. Utenpåliggende			
AT CGL+			
RT2SSEO200CGL1HIP		RoundTech MS SEO 1t CGL+ 200lm IP65	<i>Asym/sym. LiFePO4-batteri</i>
RT2SSEO400CGL1HIP		RoundTech MS SEO 1t CGL+ 400lm IP65	<i>Asym/sym. LiFePO4-batteri</i>
RT2SHEO400CGL1HIP		RoundTech MS HEO 1t CGL+ 400lm IP65	<i>For høyt tak. LiFePO4-batteri</i>
RT2SSEO200CGL3HIPB		RoundTech MSSEO 3t CGL+ 200lm IP65 svart	<i>Asym/sym. LiFePO4-batteri</i>
RT2SSEO200CGL3HIPG		RoundTech MS SEO 3t CGL+ 200lm IP65 grå	<i>Asym/sym. LiFePO4-batteri</i>
RT2SSEO200CGL3HIPS		RoundTech MS SEO 3t CGL+ 200lm IP65 sølv	<i>Asym/sym. LiFePO4-batteri</i>
AT			
RT2SSEO200ATF1H	6617250	RoundTech MS SEO 1t ATF 200lm IP44	<i>Asym/sym. LiFePO4-batteri</i>
RT2SSEO200ATF1HIP		RoundTech MS SEO 1t ATF 200lm IP65	<i>Asym/sym. LiFePO4-batteri</i>
RT2SSEO400ATF1HIP		RoundTech MS SEO 1t ATF 400lm IP65	<i>Asym/sym. LiFePO4-batteri</i>
RT2SHEO400ATF1HIP		RoundTech MS HEO 1t ATF 400lm IP65	<i>For høyt tak. LiFePO4-batteri</i>
2. Innfelt			
AT CGL+			
RT2RSEO200CGL1HIP	6617197	RoundTech MR SEO 1t CGL+ 200lm IP65	<i>Asym/sym. LiFePO4-batteri</i>
RT2RSEO200CGL3HIP	6617198	RoundTech MR SEO 3t CGL+ 200lm IP65	<i>Asym/sym. LiFePO4-batteri</i>
RT2RSEO400CGL1HIP	6617199	RoundTech MR SEO 1t CGL+ 400lm IP65	<i>Asym/sym. LiFePO4-batteri</i>
RT2RHEO200CGL3HIP	6617201	RoundTech MR HEO 3t CGL+ 200lm IP65	<i>For høyt tak. LiFePO4-batteri</i>
AT			
RT2RSEO200ATF1HIP	6617195	RoundTech MR SEO 1t ATF 200lm IP65	<i>Asym/sym. LiFePO4-batteri</i>
RT2RSEO200ATF3HIP	6617196	RoundTech MR SEO 3t ATF 200lm IP65	<i>Asym/sym. LiFePO4-batteri</i>
3. Tilbehør			
RT2R-RT		RoundTech MR hvit rund ramme	<i>For innfelt utgave</i>
RT2R-RTB		RoundTech MR svart rund ramme	<i>For innfelt utgave</i>
RT2R-RTG		RoundTech MR mørk grå rund ramme	<i>For innfelt utgave</i>
RT2R-RTS		RoundTech MR sølvfarget rund ramme	<i>For innfelt utgave</i>
RT2R-ST		RoundTech MR hvit kvadratisk ramme	<i>For innfelt utgave</i>
RT2R-STB		RoundTech MR svart kvadratisk ramme	<i>For innfelt utgave</i>
RT2R-STG		RoundTech MR mørk grå kvadratisk ramme	<i>For innfelt utgave</i>
RT2R-STS		RoundTech MR sølvfarget kvadratisk ramme	<i>For innfelt utgave</i>
RT2R-RP		RoundTech MR hvit renoveringsramme	<i>For innfelt utgave</i>
4. Reservedeler			
RT2R-BAT1		Batteripakke 3,2V 1,5Ah LiFePO4	<i>For 1t 200 lm</i>
RT2R-BAT3		Batteripakke 3,2V 3Ah LiFePO4	<i>For 3t 200 lm og 400 lm</i>

1. Armaturer



3000 LED

Varenummer	Elnr.	Type	Kommentar
------------	-------	------	-----------

1. Rund utenpåliggende

CPS CG-S

40071350381

3514 LED CG-S utenpåliggende hvit

2. Kvadratisk utenpåliggende

CPS CG-S

40071708078

SL 3614 LED CG-S IP 54 rustfri stål

3. Rund innfelt

AT CGL+

40071353365

3583 1-8h/D LED CGLLine+

CPS CG-S

40071352904

3504.1 LED CG-S innfelt rustfri stål

40071352905

3504.1 LED CG-S innfelt hvit

40071352900

3503.1 LED CG-S innfelt rustfri stål

40071352901

3503.1 LED CG-S innfelt hvit

4. Kvadratisk innfelt

CPS CG-S

40071352908

3604.1 LED CG-S innfelt rustfri stål

40071352909

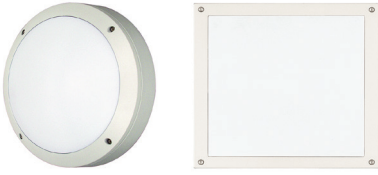
3604.1 LED CG-S innfelt hvit

5. Reservedeler

40071353399

Batteripakke Li-ion 3,6V 4300mAh

1. Armaturer



8x022 LED

Varenummer	Elnr.	Type	Kommentar
1. Armaturer			
CPS CG-S			
40071355751		84022.1 LED CG-S	
40071355750		83022.1 LED CG-S	
2. Piktogrammer			
40071351924		Piktogramsett 83022 LED CG-S	<i>For kvadratisk armatur</i>

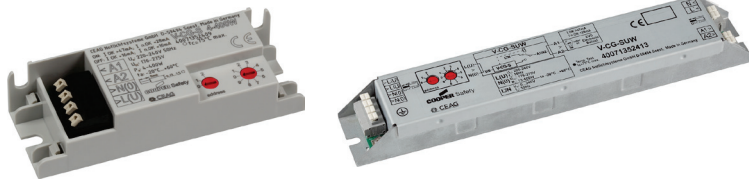
1. Armaturer



SL 9116 LED

Varenummer	Elnr.	Type	Kommentar
1. Armaturer IP54			
CPS CG-S			
40071708030		SL 9116 LED CG-S IP54 hvit	
40071708350		SL 9116 LED CG-S IP54 svart	
40071708263		SL 9116 bakkoks for utenpå. mont.	
40071708370		SL 9116 bakkoks for utenpå. mont. svart	
2. Armaturer IP65			
CPS CG-S			
40071708364		SL 9116 LED CG-S IP65 hvit	<i>Inkl. bakkoks for utenpå. mont.</i>
9116_65_7016		SL 9116 LED CG-S IP65 svart	<i>Inkl. bakkoks for utenpå. mont.</i>

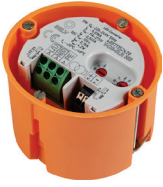
2. Moduler



V-CG-S

Varenummer	Elnr.	Type	Kommentar
1. _S			
CPS CG-S			
40071352459		V-CG-S 4-400W, 2,5 sqmm(individual pack)	M. pakn.vedlegg/jordtilkobling
40071352439		V-CG-S 4-400W (individual packaging)	M. pakningsvedlegg
40071352409		V-CG-S/4-400W (without packaging)	U. pakningsvedlegg
2. _S2			
CPS CG-S			
40071352440		V-CG-S2 (individual packaging)	M. pakningsvedlegg
40071352410		V-CG-S2 (without packaging)	U. pakningsvedlegg
3. _SE			
CPS CG-S			
40071352526		V-CG-SE 4-400W (individual packaging)	M. pakningsvedlegg
40071352528		V-CG-SE (without packaging)	U. pakningsvedlegg
4. _SB			
CPS CG-S			
40071352008		V-CG-SB.1 Modul (without packaging)	U. pakningsvedlegg
5. _SUW			
CPS CG-S			
40071352443		V-CG-SUW (individual packaging)	M. pakningsvedlegg
40071352413		V-CG-SUW (without packaging)	U. pakningsvedlegg
6. Kapsling			
CPS CG-S			
40071352765		Kapsling med strekkavlaster	

2. Moduler



V-CG-SL

Varenummer	Elnr.	Type	Kommentar
1. SLS			
CPS CG-S			
40071352449		V-CG-SLS 28 LED-driver inkl. forpakning	
40071352419		V-CG-SLS 28 (without packaging)	
40071352447		V-CG-SLS 350 LED-driver inkl. forpakning	
40071352417		V-CG-SLS 350 (without packaging)	
40071352418		V-CG-SLS 500 (without packaging)	
40071352399		V-CG-SLS 701 (without packaging)	
2. SLR			
CPS CG-S			
40071352451		V-CG-SLR 28 LED-driver inkl. forpakning	<i>For veggboкс</i>
40071352450		V-CG-SLR 350 LED-driver inkl. forpakning	<i>For veggboкс</i>
40071352420		V-CG-SLR 350 (without packaging)	<i>For veggboкс</i>
3. SLI			
CPS CG-S			
40071349560		V-CG-SLI 350 (without packaging)	<i>Lavtemp.utgave -40 °C</i>

3. Systemer



CGLine+

Varenummer	Elnr.	Type	Kommentar
------------	-------	------	-----------

1. Kompakt kontrollere

SC CGL+

CTR160CGL2KS

CGLine+ web-kompaktkontroller

2. Kontroller

SC CGL+

40071361055

CGL+ web-kontroller

For DIN-skinne montering

40071361184

6617091

CGL+ web-kontroller i kapsling

3. Programvare

SC CGL+

40071361178

6617096

CGLine+ PC programvare

3. Systemer



AE-CGLine+

Varenummer	Elnr.	Type	Kommentar
1. Kontroller i kapsling uten UPS			
SC IA - AE			
40071777994		AE CGLine+ System, 10 innganger	<i>Må tilkobles nødstrøm (min. 1t)</i>
40071777995		AE CGLine+ System, 20 innganger	<i>Må tilkobles nødstrøm (min. 1t)</i>

3. Systemer



LP-Star

Varenummer	Elnr.	Type	Kommentar
1. Nødllyssentraler			
CPS CG-S			
40071362121		LP-STAR-4-12 IP20,4 kurser,CG-S-buss	<i>Inkl. batterier</i>
40071362241		LP-STAR-4-24 IP20,4 kurser,CG-S-buss	<i>Inkl. batterier</i>
40071362361		LP-STAR-4-36 IP20,4 kurser,CG-S-buss	<i>Inkl. batterier</i>
40071362481		LP-STAR-4-48 IP20,4 kurser,CG-S-buss	<i>Inkl. batterier</i>
40071362123		LP-STAR-4-12 IP20,4 kurser,CG-S-buss/web	<i>Inkl. batterier og webmodul</i>
40071362243		LP-STAR-4-24 IP20,4 kurser,CG-S-buss/web	<i>Inkl. batterier og webmodul</i>
40071362363		LP-STAR-4-36 IP20,4 kurser,CG-S-buss/web	<i>Inkl. batterier og webmodul</i>
40071362483		LP-STAR-4-48 IP20,4 kurser,CG-S-buss/web	<i>Inkl. batterier og webmodul</i>
40071362484		LP-STAR-4-48 IP54,4 kurser,CG-S-buss	<i>Inkl. batterier. IP54-versjon</i>
2. Tilbehør			
CPS CG-S			
40071361234		LP-STAR hovedsikring 6.3 AT (10 stk.)	
40071361235		LP-STAR kurssikringer 2,5 AT (10 stk.)	
40071361449		Webmodul CG-S (m. kabelsett for LP-STAR)	
3. Kursovervåker			
CPS-CG-S			
40071361660		3-PM	

3. Systemer



AE-CU

Varenummer	Elnr.	Type	Kommentar
1. Sentral			
CPS adaptiv			
40071361359		AE-CU-W sentral for DXC-armaturer	For DG-S og ZB-S
2. Tilbehør			
40071361400		AE-CU 16 scenarioboks	
40071361401		AE-CU 8 scenarioboks	
40071361422		AE-CU relémodul for undersentraler	

3. Systemer



DualGuard-S

Varenummer	Elnr.	Type	Kommentar
------------	-------	------	-----------

1. Nødllyssentraler

CPS-CG-S

40071362525		Nødllyssentral DualGuard-S4C3	230V
40071362521		Nødllyssentral DualGuard-S12C4	230V
40071362520		Nødllyssentral DualGuard-S 12C	230V
40071362523		Nødllyssentral DualGuard-S12C6	230V
40071362524		Nødllyssentral DualGuard-S20C6	400/230V
40071362510		Nødllyssentral DualGuard-S 20	400/230V
40071362511		Nødllyssentral DualGuard-S 28	400/230V
40071362540		Nødllyssentral DualGuard-S LAD 100	400/230V

2. Undersentraler

CPS-CG-S

40071362530		Nødllyssentr.undersent. DualGuard-S US 7	230V
40071362531		Nødllyssentr.undersent. DualGuard-S US 15	230V
40071360430		Nødllyssentr.undersent. SOU CG-S 2x4A DIN	230V for DIN-skinne
40071362518		Nødllyssentr.undersent. DualGuard-S SOU1	230V
40071362519		Nødllyssentr.undersent. DualGuard-S SOU2	230V

3. Kursmoduler

CPS-CG-S

40071361550		SKU.1 CG-S 4 x 1.5A	Enpolet modulværn (i AC-drift)
40071361555		SKU.1 CG-S 4x1,5A IT	Topolet modulværn (i AC-drift)
40071361560		SKU.1 CG-S 2 x 3A	
40071361570		SKU.1 CG-S 1x6A	
40071362401		SKU-terminering fabrikk SKU.1 (1x6A)	Ved bestilling av ny sentral
40071362402		SKU-terminering fabrikk SKU.1 (2x3A)	Ved bestilling av ny sentral
40071362403		SKU-terminering fabrikk SKU.1 (4x1,5A)	Ved bestilling av ny sentral
40071360065		Kabel og plugg for utvidelse én SKU-kurs	Benyttes ved utvidelser
40071360087		Kabel/plugg for SKU 2x3a (sett)	Benyttes ved utvidelser
40071070716		Sikring 2,5AT 6,3x3mm (10 stk.)	For 4x1,5A-moduler
40071689047		Sikring 5.0 AT 6.3x32 (10 stk.)	For 2x3A-moduler
40071070715		Sikring 10AT 6,32x32 mm (10 stk.)	For 1x6A-moduler

4. Annet utstyr

CPS-CG-S

40071361644		HMI displaymodul 4.3" SP
40071361654		HMI displaymodul 7" SP
40071361600		ACU modul
40071361590		PSU modul
40071347162		AC trafo nødllyssentraler
40071361540		BCM.1 modul
40071361580		CM.1 1,7A lademodul
40071360370		CM 3,4A lademodul
40071361620		CG IV.1
40071361630		CG V.1
40071341378		Temperatursensor ekstern IP65

3. Systemer



DualGuard-S

Varenummer	Elnr.	Type	Kommentar
------------	-------	------	-----------

5. Batteriovervåking

CPS-CG-S

40071361780		BDM modul	
40071362190		12V/M6 BBS sensor	
40071362030		12V/M5 BBS sensor	
40071362202		6V/M8 BBS sensor	

6. Styre- og kursovervåkere

CPS-CG-S

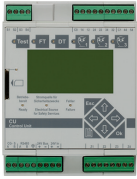
40071363080		8PM-I-bussmodul	8 inng. TN-nett / 2 inng. IT-nett
40071361660		3-PM	Benyttes også for ZB-S
40071361670		3-PM-IO	Benyttes også for ZB-S
40071361680		3-PM-IO-INV	Benyttes også for ZB-S

7. Programvare

CPS-CG-S

40071362319		DualGuard-S programvare	Prog. på minnepinne
40071362318		DG-S USB-backup fabrikk-konfigurasjon	For lagring av konfigurasjon

3. Systemer



ZB-S reservedeler

Varenummer	Elnr.	Type	Kommentar
1. Sentralutstyr			
CPS CG-S			
40071361981		PSU.1E	<i>DC/DC-konverter ny type</i>
40071361967		BCM.1E SP	<i>Batteri-kontrollmodul ny type</i>
40071347316		ZB-S PD3 printermodul	
40071361383		Webmodul CG-S (ZB-S/AT-S+)	
40071360340		ZB-S ladermodul CM 1,7A	
40071360370		CM 3,4A lademodul	
40071360750		Laderkit 3,4 A inkl. BCM og 2 x CM 1,7A	<i>For eldre ZB-S med 2,5 A lader</i>
40071360300		Kontrollmodul CU CG-S uten SD	
40071347162		AC trafo nødlyssentraler	
40071347911		SD-kort Z445 formatert	
40064070561		SD kortleser for USB	
2. Kursmoduler			
CPS CG-S			
40071347345		SKU CG-S 1X6A ZB-S kursmodul	
40071347051		SKU CG-S 2X3A ZB-S kursmodul	
40071347840		SKU CG-S 4x1,5A ZB-S kursmodul	
40071360065		Kabel og plugg for utvidelse én SKU-kurs	<i>Benyttes ved utvidelser</i>
40071360087		Kabel/plugg for SKU 2x3a (sett)	<i>Benyttes ved utvidelser</i>
40071070716		Sikring 2,5AT 6,3x3mm (10 stk.)	<i>For 4x1,5A-moduler</i>
40071689047		Sikring 5.0 AT 6.3x32 (10 stk.)	<i>For 2x3A-moduler</i>
40071070715		Sikring 10AT 6,32x32 mm (10 stk.)	<i>For 1x6A-moduler</i>

3. Systemer



Fjernovervåking

Varenummer	Elnr.	Type	Kommentar
------------	-------	------	-----------

1. RCM

CPS CG-S

40071362390

RCM-AS fjernindikator utenpåliggende

40071362395

RCM-AR fjernindikator innfelt

4. Batterier



Varenummer	Elnr.	Type	Kommentar
1. Batterier/10 års			
CPS blysyrebatteri			
40066079643		Batteri 12V 5,5Ah (A412/5,5)	For ZB-S/DG-S, bestill 18 stk.
40066079644		Batteri 12V 8,5Ah (A412/8,5)	For ZB-S/DG-S, bestill 18 stk.
40066071593		Batteri 12V 16 Ah (H.C 12473)	For ZB-S/DG-S, bestill 18 stk.
13319659		Batteri 12V 23,3 Ah (P12V600)	For ZB-S/DG-S, bestill 18 stk.
13319710		Batteri 12V 32Ah (L12V32)	For ZB-S/DG-S, bestill 18 stk.
13319711		Batteri 12V 39,8 Ah (P12V875)	For ZB-S/DG-S, bestill 18 stk.
13319712		Batteri 12V 50,4Ah (XL12V50)	For ZB-S/DG-S, bestill 18 stk.
13319713		Batteri 12V 53,7Ah (XP12V1800)	For ZB-S/DG-S, bestill 18 stk.
13319714		Batteri 12V 66,2Ah (XP12V2500)	For ZB-S/DG-S, bestill 18 stk.
13319715		Batteri 12V 85,7Ah (XL12V85)	For ZB-S/DG-S, bestill 18 stk.
13319716		Batteri 12V 89,4Ah (XP12V3000)	For ZB-S/DG-S, bestill 18 stk.
2. Kabelsett / 216V			
CPS blysyrebatteri			
40071346005		Batterikabelsett 5,5/8,5/12Ah	DG-S / ZB-S
40071362067		Batterikabelsett 16Ah DG-S 12C4/ZB-S10C3	DG-S 12C4 / ZB-S10C3
40071362068		Batterikabelsett 16Ah DG-S 4C3/ZB-S 2C3	DG-S 4C3 / ZB-S 2C3
40071360242		Batterikabelsett 14 Ah ZB-C/2 C3	ZB-S
40071346775		Batterikabelsett skap 118 Ah	DG-S / ZB-S
40071346778		Batterikabelsett skap 59,2Ah/66,2 Ah	DG-S / ZB-S
40071362378		Batt.kabelsett DG-S Compact 23,3-39,8Ah	DG-S 12C4, 12C, 12C6 og 20C6
40071346779		Batterikabelsett 14-39,8 Ah	DG-S / ZB-S
40071346819		Batterikabelsett 59,2/66,2 Ah	DG-S / ZB-S
40071347446		Batterikabelsett skap 50,4/53,7 Ah	DG-S / ZB-S
40071347449		Batterikabelsett 50,4/53,7 Ah	DG-S / ZB-S
40071360230		Batterikabelsett skap 85,7Ah/89,4 Ah	DG-S / ZB-S
40071360231		Batterikabelsett 85,7/89,4 Ah	DG-S / ZB-S
3. Batteri LP-Star			
CPS blysyrebatteri			
40066071147		Batteri 12V 12Ah (PS-12120S)	LP-Star enkeltbatteri

5. Programvare



CGVision

Varenummer	Elnr.	Type	Kommentar
------------	-------	------	-----------

1. Programvareversjoner

CGVision

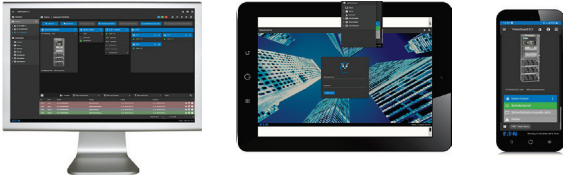
40071361020		CGVision Basic Package 1	
40071361022		CGVision Basic Package 2	
40071361024		CGVision Basic Package 3	
40071361021		CGVision Pro Package 1	
40071361023		CGVision Pro Package 2	
40071361025		CGVision Pro Package 3	
40071360336		CGVision CEAG BACnet-Server	

2. Nettverkskomponenter

Tilbehør

40071347144		PC-Midi WIN10 engelsk inkl. mus/tastatur	
40071347155		24"- TFT flatskjerm full HD	
40071363164		CG-S/IP-Router+ 1P.V3	
40071070583		4-veis repeater for CG-S bus	

5. Programvare



VisionGuard

Varenummer	Elnr.	Type	Kommentar
1. Programvareversjoner			
VisionGuard			
40071362800		VisionGuard basic version 3	<i>For 3 sentraler</i>
40071362805		VisionGuard basic version 10	<i>For 10 sentraler</i>
40071362810		VisionGuard basic version 25	<i>For 25 sentraler</i>
40071362830		VisionGuard lisensnøkkel plantegninger	
40071362835		VisionGuard BACnet/IP-grensesnitt	

2. Tilbehør

Tilbehør			
40071362880		PC-Midi WIN10 prof. VisionGuard	
40071347155		24"- TFT flatskjerm full HD	



Kontakt Eaton

Bestillinger og forespørsler:

SalesNorway@eaton.com

Telefon

Telefon hverdager 08.00 – 16.00

Tlf: +47 23 03 65 50

www.eaton.com